

Alfresco™

Open Air Culinary Systems

LISTA DE PRECIOS 2025
04022025



HOMEA
PREMIUM

HOMEA
www.homea.mx
Email: ventas@homea.mx
Whatsapp: (442)258.0251 Tel: (442)216.3552



For decades, the founders of Alfresco have been manufacturing commercial kitchen equipment for many of the nation's finest restaurants and hotels. Alfresco Open-Air Culinary Systems was launched, offering a whole new level of quality in luxury residential appliances. This would be the most complete line of restaurant-inspired luxury outdoor kitchen appliances, utilizing the same manufacturing methodologies used in commercial restaurant equipment.

Alfresco appliances will make any professional chef feel right at home, and will inspire anyone who wishes to produce culinary creations like a pro. Unparalleled quality, workmanship, performance and design combined with constant innovation have been the driving force in making Alfresco the most distinctive and complete line of outdoor kitchen appliances available today. All Alfresco appliances are proudly built from scratch in City of Industry, California - U.S.A.

TABLE OF CONTENTS

	Page
Alfresco Grills	
Features & Benefits	3
Built-In Grills	6
Cart Grills	12
Alfresco Grill Accessories	
Drop-In Grill Accesories	20
Versa Power System	21
Side Burners & Accessories	23
Versa Sink System & Accessories	24
Garnish Rail & Plating Station	26
Trash Centers & Accessories	26
Doors & Drawers	27
Dry Storage Pantries	28
Refrigeration & Cooling	29
Food Warmers	31
Wind Guards	31
Alfresco Pizza Ovens	32
Pizza Oven & Accesories	33
Vinil Covers	34

ALFRESCO GRILL FEATURES AND BENEFITS



Accufire™ Exclusive Heat Delivery System



Delivers evenly distributed extreme high -heat to the cooking surface, and consists of special 18SR burners

- 27,500 BTUs
- 18SR (Scaling and Corrosion Resistant) made from titanium and stainless steel
- Exclusive design: Dual Rows of clean-combusting, double-lanced ports on three sides, plus crossover tube in front delivering optimal flame distribution
- Lifetime warranty



Sear Zone™



- Exclusive 1500° Infrared Technology
- 27,500 BTU Infrared Burner available on all LXE grills with 100% combusting ceramic surface for intense even heat and authentic steakhouse results
- Reaches 1500° in four minutes and cooks 50% faster with virtually no flare-ups
- Special “V-Shaped” flavorizer cooking grate over Sear Zone burner captures the natural juices, fats, and flavors, then caramelizes them to the food for delectable mouthwatering flavor



Signature Taste™ Integrated, Wood Smoker & Herb Infusion System



Dedicated 5,000 BTU stainless steel burner. Exclusive cold smoke capabilities. Drawer holds large chunks of wood, and linear defusing vents naturally eject smoke at 200° to food zone.



EZ-Lift™ Exclusive Hood-Assist System



Unique integrated and hidden spiral torsion system made of non-corrosive stainless steel for many years of use. Handle spins smoothly in nickle-plated end caps for optimal comfort.



Exclusive Hidden & Integrated 120lb. Torque Mega-Drive™ Rotisserie Motor



This unique chain-driven whisper quiet system turns food at a smooth and consistent speed no matter how many pounds. No counter balance required. Produces hassle-free delicious rotissed foods. Smoketiss™ using the smoke and herb infusion system.



Stainless Steel Cooking Grates

Over briquette and “U” burner sections. Heavy duty ³/₈” round stainless steel rod cooking grates have a special nonstick electro-polished finish.



Precision Control Panel Lighting

All new LED front panel lighting projects rich amber beams of light exactly where you need them.



Refractive Ceramic 5-Way Heat Distributing Briquettes



Eliminate hot and cold spots making the effective grilling area 100% of the grilling surface. A special pyramid shape with a flat top and heat-holding cavity on underside evenly delivers intense heat to the cooking surface. Radiant tray locks briquettes in place. Turn tray over and fire burners on high with lid closed to self-clean.



Adjustable Food Warming and Grilling Rack

The three-position adjustable warming rack stores up and out of the way when rotisserie. Ideal for above-grilling-surface holding and cooking.



Fit and Finish

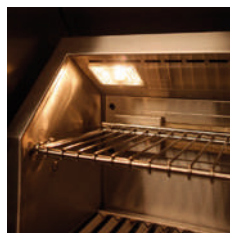
With hand polished accents, uniquely clean lines and all helic-arc welded seams, the beauty and the quality are in the details.



Flush Inset Rotisserie



All Alfresco grills come with a flush-mounted 1500° rear ceramic infrared rotisserie burner.



Halogen Work Lights

Integrated high-Intensity Halogen Work Lights angle slightly toward the center for bright, even illumination. Light lens is easily removable without the use of tools for easily changing bulbs, and cleaning.



Attractive Nickel-Plated Ergonomically Designed Control Knobs and Bezels

The all new grill knobs have been redesigned with precision touch in mind.



Made In The U.S.A.



Made from all commercial-grade 304, 18-8 stainless steel, all helic-arc hand-welded seams with no mechanical fasteners.



Durasleeve™ Exclusive Heat Protected Wiring



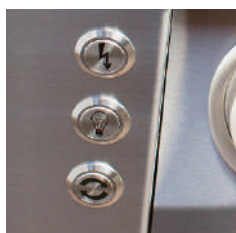
Electrical wires are each encapsulated their full length with a 600° heat-resistance silicone sleeve, and electric connectors are protected with a silicone boot of same heat resistance silicone.



Safetouch™ Exclusive Control Panel Air Cooling Curtain



A special air-cooling plenum blasts a curtain of cool air that naturally flows up between the front control panel and firebox keeping front panel and bullnose safely cool to touch. This also protects all the electronics.



Newly Redesigned Controls

Stainless Steel push button ignition, lighting, and rotisserie, controls are ergonomically integrated into the front control panel.



Free Grill Cover

No charge grill cover shipped with each Alfresco Grill.



Full Two Year Warranty



The Alfresco Grill Warranty covers all parts and labor for 2 years from date of purchase.

CREATE THE ALFRESCO OUTDOOR KITCHEN OF YOUR DREAMS, AND LUXURIATE IN THE LIFESTYLE.

Alfresco[™]
Open Air Culinary Systems



ALFRESCO BUILT-IN GRILLS

Alfresco[™]
Open Air Culinary Systems



ALFRESCO 30" BUILT-IN GRILL

ALXE30

Features

- Two 18-SR Stainless Steel Main Burners Producing 55,000 BTUs
- Integrated Rotisserie System with Built-In Motor and 15,000 BTU Infrared Burner
- Smoker System with 5,000 BTU Dedicated Burner and Drawer for Wood Chips or Herbs
- 542 sq. in. Actual Grilling Area
- 3-Position Warming Rack Stores Up and Out of the Way when Rotissing
- Dual Integrated High-Intensity Halogen Work Lights
- User-Friendly Push-Button Ignition with Sealed 110v AC Power Source
- Optional Infrared Sear Zone™
- Grill Cover Included
- 2 Year Full Warranty



MODEL	DESCRIPTION	WIDTH	USD
ALXE30	30" Standard Grill Built-In	30"	\$7,025
ALXE30LP	30" Standard Grill Built-In LP GAS	30"	\$7,025
ALXE30SZ	30" Sear Zone Grill Built-In	30"	\$7,025
ALXE30SZLP	30" Sear Zone Grill Built-In LP	30"	\$7,025

OPTIONS AND ACCESSORIES

MODEL	DESCRIPTION	WIDTH	USD
XE30C	30" Standard Cart	30"	\$2,919
AIJ-30	Insulated Jacket For ALX-30 Grill	30"	\$1,246
AGV-30	30" Cover For Built-In Grills	30"	\$163
AGV-30C	30" Cover For Cart Models	30"	\$181
AGV-30CSB	*30" Cover For Cart Models W/ Side Burner	30"	\$185
AVDT-30	*Cover For 30" Beverage Center	30"	\$222

* For use when converting from NG to LP, required for use with a standard 5 gallon propane tank.

ALFRESCO 36" BUILT-IN GRILL

ALXE36

Features

- Three 18-SR Stainless Steel Main Burners Producing 82,500 BTUs
- Integrated Rotisserie System with Built-In Motor and 18,500 BTU Infrared Burner
- Smoker System with 5,000 BTU Dedicated Burner and Drawer for Wood Chips or Herbs
- 660 sq. in. Actual Grilling Area
- 3-Position Warming Rack Stores Up and Out of the Way when Rotissing
- Dual Integrated High Intensity Halogen Work Lights
- User-Friendly Push-Button Ignition with Sealed 110v AC Power Source
- Optional Infrared Sear Zone™
- Grill Cover Included
- 2 Year Full Warranty



MODEL	DESCRIPTION	WIDTH	USD
ALXE36	36" Standard Grill Built-In	36"	\$9,213
ALXE36LP	36" Standard Grill Built-In LP	36"	\$9,213
ALXE36SZ	36" Sear Zone Grill Built-In	36"	\$9,213
ALXE36SZLP	36" Sear Zone Grill Built-In LP	36"	\$9,213

OPTIONS AND ACCESSORIES

MODEL	DESCRIPTION	WIDTH	USD
XE36C	36" Standard Cart	36"	\$3,342
XE-36AG	36" Grill accessory Grate & Tray	36"	\$90
AIJ-36	Insulated Jacket For ALX-36 Grill	36"	\$1,305
AGV-36	36" Cover For Built-In Grills	36"	\$185
AGV-36C	36" Cover For Cart Models	36"	\$198
AGV-36CSB	*36" Cover For Cart Models W/ Side Burner	36"	\$200

* For use when converting from NG to LP, required for use with a standard 5 gallon propane tank.

ALFRESCO 42" BUILT-IN GRILL ALXE42

Features

- Three 18-SR Stainless Steel Main Burners Producing 82,500 BTUs
- Integrated Rotisserie System with Built-In Motor and Dual 18,500 BTU Infrared Burner
- Smoker System with 5,000 BTU Dedicated Burner and Drawer for Wood Chips or Herbs
- 770 sq. in. Actual Grilling Area
- 3-Position Warming Rack Stores Up and Out of the Way when Rotissing
- Dual Integrated High-Intensity Halogen Work Lights
- User-Friendly Push-Button Ignition with Sealed 110v AC Power Source
- Optional Infrared Sear Zone™
- Grill Cover Included
- 2 Year Full Warranty



MODEL	DESCRIPTION	WIDTH	USD
ALXE42	42" Standard Grill Built-In	42"	\$10,179
ALXE42LP	42" Standard Grill Built-In LP	42"	\$10,179
ALXE42SZ	42" Sear Zone Grill Built-In	42"	\$10,179
ALXE42SZLP	42" Sear Zone Grill Built-In LP	42"	\$10,179

OPTIONS AND ACCESSORIES

MODEL	DESCRIPTION	WIDTH	USD
XE42C	42" Standard Cart	42"	\$3,724
XE42CD	42" Deluxe Cart	42"	\$4,151
AIJ-42	Insulated Jacket For ALX-42 Grill	42"	\$1,372
AGV-42	42" Cover For Built-In Grills	42"	\$206
AGV-42C	42" Cover For Cart Models	42"	\$207
AGV-42CSB	*42" Cover For Cart Models W/ Side Burner	42"	\$207

* For use when converting from NG to LP, required for use with a standard 5 gallon propane tank.

ALFRESCO 56" BUILT-IN GRILL ALXE56

Features

- Three 18-SR Stainless Steel Main Burners Producing 82,500 BTUs
- Integrated Rotisserie System with Built-In Motor and 18,500 BTU Infrared Burner
- Smoker System with 5,000 BTU Dedicated Burner and Drawer for Wood Chips or Herbs
- 770 sq. in. Actual Grilling Area
- 3-Position Warming Rack Stores Up and Out of the Way when Rotissing
- Dual Integrated 20,000 BTU Side Burner with Recessed, Sealed Top and Stainless Steel Cover
- User-Friendly Push-Button Ignition with Sealed 110v AC Power Source
- Optional Infrared Sear Zone™
- Grill Cover Included
- 2 Year Full Warranty



MODEL	DESCRIPTION	WIDTH	USD
ALXE56	*56" Standard Grill With Side Burner Built-In	56"	\$12,536
ALXE56LP	56" Standard Grill With Dbl Side Burner Built-In LP	56"	\$12,536
ALXE56SZ	56" Sear Zone Grill W Side Burner Built-In	56"	\$12,536
ALXE56SZLP	56" Sear Zone Grill With Dbl Side Burner Built-In LP	56"	\$12,536

OPTIONS AND ACCESSORIES

MODEL	DESCRIPTION	WIDTH	USD
XE56C	56" Standard Cart	56"	\$4,623
AIJ-56	Insulated Jacket For ALX-56 Grill	56"	\$1,496
AGV-56	56" Cover For Built-In Grills	56"	\$207
AGV-56C	56" Cover For Cart Models	56"	\$222
AGV-56BFG	56" Cover For Built-In Grills	56"	\$2,069
AGV-56BFGC	*56" Cover For Cart Models	56"	\$2,217

* For use when converting from NG to LP, required for use with a standard 5 gallon propane tank.

ALFRESCO 56" BUILT-IN ALL GRILL ALXE56BFG

Features

- Three 18-SR Stainless Steel Main Burners Producing 82,500 BTUs
- Sear Zone with 27,500 BTU Ceramic Infrared Burner
- Integrated Rotisserie System with Built-In Motor and Dual 15,000 BTU Infrared Burners
- Smoker System with 5,000 BTU Dedicated Burner and Drawer for Wood Chips or Herbs
- 998 sq. in. Actual Grilling Area
- 3-Position Warming Rack Stores Up and Out of the Way when Rotissing
- Dual Integrated High-Intensity Halogen Work Lights
- User-Friendly Push-Button Ignition with Sealed 110v AC Power Source
- Grill Cover Included
- 2 Year Full Warranty



MODEL	DESCRIPTION	WIDTH	USD
ALXE56BFG	56" Sear Zone Grill Built-In	56"	\$14,409
ALXE56BFGLP	56" Sear Zone Grill Built-In LP	56"	\$14,409



* For use when converting from NG to LP, required for use with a standard 5 gallon propane tank.

ALFRESCO CART GRILLS

Alfresco[™]
Open Air Culinary Systems



ALFRESCO 30" CART GRILL ALXE30C

Features

- Two 18-SR Stainless Steel Main Burners Producing 55,000 BTUs
- Integrated Rotisserie System with Built-In Motor and 15,000 BTU Infrared Burner
- Smoker System with 5,000 BTU Dedicated Burner and Drawer for Wood Chips or Herbs
- 542 sq. in. Actual Grilling Area
- 3-Position Warming Rack Stores Up and Out of the Way when Rotissing
- Dual Integrated High-Intensity Halogen Work Lights
- User-Friendly Push-Button Ignition with Sealed 110v AC Power Source
- Optional Infrared Sear Zone™
- Grill Cover Included
- 2 Year Full Warranty



MODEL	DESCRIPTION	WIDTH	USD
ALXE30C	30" Standard Grill On Cart	30"	\$8,302
ALXE30CLP	30" Standard Grill On Cart LP	30"	\$8,302
ALXE30SZC	*30" Searzone Grill Cart	30"	\$8,302
ALXE30SZCLP	30" Sear Zone Grill Cart LP	30"	\$8,302



* For use when converting from NG to LP, required for use with a standard 5 gallon propane tank.

ALFRESCO 36" CART GRILL ALXE36C

Features

- Three 18-SR Stainless Steel Main Burners Producing 82,500 BTUs
- Integrated Rotisserie System with Built-In Motor and 18,500 BTU Infrared Burner
- Smoker System with 5,000 BTU Dedicated Burner and Drawer for Wood Chips or Herbs
- 660 sq. in. Actual Grilling Area
- 3-Position Warming Rack Stores Up and Out of the Way when Rotissing
- Dual Integrated High Intensity Halogen Work Lights
- User-Friendly Push-Button Ignition with Sealed 110v AC Power Source
- Optional Infrared Sear Zone™
- Grill Cover Included
- 2 Year Full Warranty



MODEL	DESCRIPTION	WIDTH	USD
ALXE36C	36" Standard Grill W/ Cart	36"	\$11,948
ALXE36CLP	36" Standard Grill W/ Cart LP	36"	\$11,948
ALXE36SZC	36" Sear Zone Grill Cart	36"	\$11,948
ALXE36SZCLP	36" Sear Zone Grill Cart LP	36"	\$11,948



* For use when converting from NG to LP, required for use with a standard 5 gallon propane tank.

ALFRESCO 42" CART GRILL ALXE42C

Features

- Three 18-SR Stainless Steel Main Burners Producing 82,500 BTUs
- Integrated Rotisserie System with Built-In Motor and Dual 18,500 BTU Infrared Burners
- Smoker System with 5,000 BTU Dedicated Burner and Drawer for Wood Chips or Herbs
- 770 sq. in. Actual Grilling Area
- 3-Position Warming Rack Stores Up and Out of the Way when Rotissing
- Dual Integrated High-Intensity Halogen Work Lights
- User-Friendly Push-Button Ignition with Sealed 110v AC Power Source
- Optional Infrared Sear Zone™ and Refrigerated Base Cabinet (See Next Page)
- Grill Cover Included
- 2 Year Full Warranty



MODEL	DESCRIPTION	WIDTH	USD
ALXE42C	42" Standard Grill W/ Cart	42"	\$13,155
ALXE42CLP	42" Standard Grill W/ Cart LP	42"	\$13,155
ALXE42CD	42" Standard Grill W/ Cart Deluxe NG	42"	\$13,635
ALXE42CDLP	42" Standard Grill W/ Cart Deluxe LP	42"	\$13,635
ALXE42SZC	42" Sear Zone Grill W/ Cart NG	42"	\$13,155
ALXE42SZCLP	42" Sear Zone Grill W/ Cart LP	42"	\$13,155
ALXE42SZCD	42" Sear Zone Grill W/ Cart Deluxe NG	42"	\$13,635
ALXE42SZCDLP	42" Sear Zone Grill W/ Cart Deluxe LP	42"	\$13,635



* For use when converting from NG to LP, required for use with a standard 5 gallon propane tank.

ALFRESCO 56" CART GRILL

ALXE56C

Features

- Three 18-SR Stainless Steel Main Burners Producing 82,500 BTUs
- Integrated Rotisserie System with Built-In Motor and 18,500 BTU Infrared Burner
- Smoker System with 5,000 BTU Dedicated Burner and Drawer for Wood Chips or Herbs
- 770 sq. in. Actual Grilling Area
- 3-Position Warming Rack Stores Up and Out of the Way when Rotissing
- Dual Integrated High Intensity Halogen work Lights
- Dual Integrated 20,000 BTU Side Burner with Recessed, Sealed Top and Stainless Steel Cover
- User-Friendly Push-Button Ignition with Sealed 110v AC Power Source
- Cart Model Features Dual Storage Drawers
- Optional Infrared Sear Zone™ and Refrigerated Base Cabinet (See Page 20)
- Grill Cover Included
- 2 Year Full Warranty



MODEL	DESCRIPTION	WIDTH	USD
ALXE56C	*56" Standard Grill W/ Sideburner Cart	56"	\$17,554
ALXE56CLP	56" Standard Grill W/ Sideburner Cart LP	56"	\$17,554
ALXE56SZC	56" Searzone Grill W/ Sideburner Cart NG	56"	\$17,554
ALXE56SZCLP	56" Searzone Grill W/ Sideburner Cart LP	56"	\$17,554



* For use when converting from NG to LP, required for use with a standard 5 gallon propane tank.

ALFRESCO 56" CART ALL GRILL ALXE56BFGC

Features

- Three 18-SR Stainless Steel Main Burners Producing 82,500 BTUs
- Sear Zone™ with 27,500 BTU Ceramic Infrared Burner
- Integrated Rotisserie System with Built-In Motor and Dual 15,000 BTU Infrared Burners
- Smoker System with 5,000 BTU Dedicated Burner and Drawer for Wood Chips or Herbs
- 998 sq. in. Actual Grilling Area
- 3-Position Warming Rack Stores Up and Out of the Way when Rotissing
- Dual Integrated High-Intensity Halogen Work Lights
- User-Friendly Push-Button Ignition with Sealed 110v AC Power Source
- Cart Model Features Dual Storage Drawers
- Optional Refrigerated Base Cabinet (See Page 21)
- Grill Cover Included
- 2 Year Full Warranty



MODEL	DESCRIPTION	WIDTH	USD
ALXE56BFGC	*56" Standard All Grill W/ Cart	56"	\$18,853
ALXE56BFGCLP	56" Standard All Grill W/ Cart LP	56"	\$18,853



* For use when converting from NG to LP, required for use with a standard 5 gallon propane tank.



GAS GRILLED

MODEL	DESCRIPTION	USD
AXE30GT	30" Dual Zone, Thematically Controlled Gas Griddle NG	\$6,230
AXE30GTLP	30" Dual Zone, Thematically Controlled Gas Griddle LP	\$6,230
AXE30GTC	30" Dual Zone, Thematically Controlled Gas Griddle MOUNTED ON A 30" STANDARD, 2 DOOR CART.	\$9,149
XE30GTC	30" STANDARD, 2 DOOR CART (Cart Only) for a Dual Zone, Thematically Controlled Gas Griddle.	\$2,919

* For use when converting from NG to LP, required for use with a standard 5 gallon propane tank.

CHOOSE YOUR ACCESSORIES

Alfresco[™]
Open Air Culinary Systems

Alfresco offers the industry's largest selection of restaurant inspired grill-transforming outdoor kitchen accessories! Review the following pages to build your dream outdoor kitchen using a wide variety of Alfresco's complementary products.





DROP-IN GRILL ACCESORIES



INDIRECT ROASTING POD

Turn your grill into an amazing roasting oven with this accessory. Holds drip pan for self-basting, bringing out true slow-roast flavor. Use adjacent burners to create convection heat, or smoke-and-roast using the smoke and herb infusion system.



STEAMER | FRYER | PASTA COOKER

Drops into any Alfresco grill to blanch, steam, fry or boil.



SOLID FUEL INSERT

Transform your Alfresco gas grill into a wood-source cooking system. Simply drop this specially designed insert into the grill and fill with your favorite wood, lump charcoal, or other solid fuel for real wood-cooking flavor.



COMMERCIAL GRIDDLE

$\frac{3}{16}$ " Solid stainless steel plate with side and back splash that can be used with any Alfresco grill. Great for teppanyaki, fajitas, breakfast, or juicy burgers.

MODEL	DESCRIPTION	WIDTH	USD
AIC-POD	Grill Mounted Cooking Pod		\$628
AG-SF	Grill Mounted Steamer/Fryer		\$1,026
SFI-POD	Solid Fuel Insert		\$1,143
AGSQ-G	Griddle For Grill Mounting		\$628



VERSA POWER SYSTEM

Alfresco's new Versa Power™ cooker offers 400 to 65,000 BTUs of power for total heat control. The unique, specially designed super heavy-duty spider grate can handle from the smallest of saucepans, and up to a 100 quart stock pot. With numerous options to expand it's versatility, it is the perfect complementary appliance to complete your outdoor kitchen.

- Power and Versatility at your Fingertips with Numerous Options
- Unique Individually Controlled Double Burner System
- Brass Center Burner Adjusts from 400 to 20,000 BTUs
- Stainless Steel Outer Tube Burner Adjusts from 5,000 to 45,000 BTUs
- 5/16" Diameter Stainless Steel Spider Grate with Removable Trivet
- Ideal For Use as a European French Top
- The Perfect Complementary Appliance to Complete Your Outdoor Kitchen



Simmer delicate sauces at a low 400 BTU



Center burner adjusts from 400 to 20,000 BTU



Outer burner adjusts from 5,000 to 45,000 BTU



Both burners yield an unprecedented 65,000 BTU



MODEL	DESCRIPTION	WIDTH	USD
AXEVP	24" Versapower Cooker NG	24"	\$3,325
AXEVPLP	24" Versapower Cooker LG	24"	\$3,325



MODEL	DESCRIPTION	WIDTH	USD
AXEVP-C	24" Cart For Versapower Cooker	24"	\$1,573



MODEL	DESCRIPTION	WIDTH	USD
AXEVP-TG	19" Teppanyaki Griddle	19"	\$1,333



MODEL	DESCRIPTION	WIDTH	USD
AXEVP-WOK	22" Commercial Wok	22"	\$301



MODEL	DESCRIPTION	WIDTH	USD
POT FAUCET	Pot Filler Faucet W/ Double Joint Spout		\$688



MODEL	DESCRIPTION	WIDTH	USD
AXEVP-T10	Pot Filler Tower 10"-14" Adjustable		\$1,747



MODEL	DESCRIPTION	WIDTH	USD
AXEVP-COUNTER	*AGVPC-All Stainless Counter W/ Storage		\$6,255
AXEVP-LP TANK	*14" LP Tank Attachment For AGVPC Counter		\$815



MODEL	DESCRIPTION	WIDTH	USD
AXE-30DR-SC	30" Versa Power Accessory Drawer	30"	\$1,886

SIDE BURNERS & ACCESSORIES



MODEL	DESCRIPTION	WIDTH	USD
AXESB-2	14" Built-In Dbl Side Burner NG	14"	\$2,082
AXESB-2LP	14" Built-In Dbl Side Burner LP	14"	\$2,082
AXESB-2C	14" Dbl Side Burner For Cart NG	14"	\$2,424
AXESB-2CLP	14" Dbl Side Burner For Cart LP	14"	\$2,424



MODEL	DESCRIPTION	WIDTH	USD
AG-WOK	Commercial Wok 14" W/ Handle	14"	\$260
AG-WR	Wok Ring Adaptor	14"	\$221



MODEL	DESCRIPTION	WIDTH	USD
AGSB-G	Griddle For Side Burner		\$677





VERSA SINK SYSTEM AND ACCESSORIES

Versa sinks are one of the most versatile appliances for your outdoor kitchen. This modular system transforms from a sink to an ice bin to a beverage center to a wash-up center in a matter of seconds using components found in the following pages.

- 3" Basket Drain with Stopper
- Full Ice Capacity of 90 Pounds
- 1" Foam Insulation on All Sides and Bottom
- Wood Cutting Board
- Hang-On Front Bottle Speed Rail (4 Bottle Capacity)



MODEL	DESCRIPTION	WIDTH	USD
AGBC-14 ¹	14" Bartender & Sink System	14"	\$1,782
AGBC-24 ²	24" Bartender & Sink System	24"	\$2,496

(1) Includes: 10" wide speed rail and sliding ice cover

(2) Includes: 14" wide speed rail, bottle opener, 4- bottle well with holder tray and sliding ice cover



MODEL	DESCRIPTION	WIDTH	USD
AGBC-30	30" Main Sink System	30"	\$2,186



MODEL	DESCRIPTION	WIDTH	USD
BAR PACKAGE ¹	Bartending Package for 30" Sink	30"	\$1,434
SINK PACKAGE ²	Preparation Package for 30" Sink	30"	\$977

(1) Includes: 6" deep Ice Pan, Cutting Board, Speed Rail, 4 Bottle Wells, Blender Shelf, Bottle Opener with Cap Catcher and Towel Holder

(2) Includes: 4" Porforated Colander, Wood Cutting Board, Speed Rail and Towel Holder

VERSA SINK SYSTEM ACCESSORIES

MODEL	DESCRIPTION	WIDTH	USD
BO	Bottle Opener W/ Cap Catch & Towel Rack		\$249
SPR-LG	Speed Rail - Large	19"	\$696
SPR-SM	Speed Rail - Small	14"	\$556
TH	Towel Holder		\$187
CT	Condiment Tray		\$238
DS	Display Shelf		\$187
HS-30	Serving Shelf W/ Light		\$1,015
ICE PAN	Ice Pan - 6" Deep - Stainless Steel		\$187
MS	Middle Shelf (HS-30 or PR-30 Required)		\$187
PANTRY FAUCET	Commercial Dual Supply Pantry Faucet		\$922
PR-30	High Shelf W/ Pot Rack & Light		\$1,295
SC-30	Versa Sink S/S Cover		\$480
BS	Blender Shelf		\$278
BWELL	4 Bottle Wells W/ Holder Tray		\$200
COLANDER	Stainless Steel Colander - 4" Deep		\$187



MODEL	DESCRIPTION	WIDTH	USD
ASK-T	14-Inch Outdoor Rated Prep And Wash Sink With Towel Dispenser	14"	\$2,069



MODEL	DESCRIPTION	WIDTH	USD
RAIL-14	Small Speed Rail	14"	\$249
RAIL-19	Large Speed Rail	19"	\$303



MODEL	DESCRIPTION	WIDTH	USD
AXE-ID	26" Under Counter Ice Drawer & Bev Center Insulated	26"	\$3,853

GARNISH RAIL & PLATING STATION



MODEL	DESCRIPTION	WIDTH	USD
APS-30P	*30" Plate & Garnish Rail W/ Food Pans	30"	\$2,704

TRASH CENTERS & ACCESSORIES



MODEL	DESCRIPTION	WIDTH	USD
AXE-TC-SC	15" Trash Center Drawer	15"	\$1,416
AXE-TC2D-SC	18" Dual Trash Center / Recycling Drawer (deep)	18"	\$1,678



MODEL	DESCRIPTION	WIDTH	USD
APWC	10" Prep & Waste Chute Assembly	10"	\$597



MODEL	DESCRIPTION	WIDTH	USD
AXE-TH	17" Paper Towel Holder	17"	\$574

DOORS AND DRAWERS



MODEL	DESCRIPTION	WIDTH	USD
AXE-17L-01	17" Single Access Left Door	17"	\$487
AXE-17R-01	17" Single Access Right Door	17"	\$487



MODEL	DESCRIPTION	WIDTH	USD
AXE-23L-01	23" Single Access Left Door	23"	\$680
AXE-23R-01	23" Single Access Right Door	23"	\$680



MODEL	DESCRIPTION	WIDTH	USD
AXE-30-01	30" Double Access Door	30"	\$839
AXE-36-01	36" Double Access Door	36"	\$956
AXE-42-01	42" Double Access Door	42"	\$1,019



MODEL	DESCRIPTION	WIDTH	USD
AXE-17E	17" Island Door Enclosures	17"	\$725
AXE-23E	23" Island Door Enclosures	23"	\$994
AXE-30E	30" Island Door Enclosures	30"	\$1,222
AXE-36E	36" Island Door Enclosures	36"	\$1,399
AXE-42E	42" Island Door Enclosures	42"	\$1,486



MODEL	DESCRIPTION	WIDTH	USD
XEDS-1*	Access Door Bin	17" & 30"	\$112
XEDS-2*	Access Door Bin	23" & 42"	\$112
XEDS-3*	Access Door Bin	36"	\$112
XEDS-4*	Access Door Bin		\$112
XEDS-5*	Access Door Bin for AXE-DDC-L/R-42SC		\$112



MODEL	DESCRIPTION	WIDTH	USD
AXE-DDR-L-SC	17" One Drawer W/ Door Open Left	17"	\$1,381
AXE-DDR-R-SC	17" One Drawer W/ Door Open Right	17"	\$1,381



MODEL	DESCRIPTION	WIDTH	USD
AXE-DDC-L-SC	32" Three Drawers W/ Door On Left	32"	\$2,281
AXE-DDC-R-SC	32" Three Drawers W/ Door On Right	32"	\$2,281

30", 36" and 42" double sided access doors require two accessory bins each.



MODEL	DESCRIPTION	WIDTH	USD
XEDS-1	DDC Combos XEDS-1 (100-2945)	32"	\$112
XEDS-4	DDR Combos XEDS-4 (100-3019)	17"	\$112



MODEL	DESCRIPTION	WIDTH	USD
AXE-2DR-SC	17" Two Tier Storage Drawers	17"	\$1,495



MODEL	DESCRIPTION	WIDTH	USD
AXE-3DR-SC	17" Three Tier Storage Drawers	17"	\$1,939



MODEL	DESCRIPTION	WIDTH	USD
AXE-3DRTH-SC	17" Towel Holder W/ Three Drawers	17"	\$2,373



MODEL	DESCRIPTION	WIDTH	USD
AXE-30DR-SC	30" Versapower Accessory Drawer	30"	\$1,886

MODEL	DESCRIPTION	WIDTH	USD
AXE-18LPDR-SC	18" Island LP Tank Drawer	18"	\$874

DRY STORAGE PANTRIES



MODEL	DESCRIPTION	WIDTH	USD
AXEDSP-30H	30" High Profile Unit (33" High)	30"	\$3,788
AXEDSP-30L	30" Low Profile Unit (21" High)	30"	\$3,225



MODEL	DESCRIPTION	WIDTH	USD
AXEDSP-36L	36" Low Profile Unit (21" High)	21"	\$3,615



MODEL	DESCRIPTION	WIDTH	USD
AXEDSP-42H	42" High Profile Unit (33" High)	42"	\$4,558
AXEDSP-42L	42" Low Profile Unit (21" High)	42"	\$3,885



REFRIGERATION & COOLING



MODEL	DESCRIPTION	WIDTH	USD
ARXE-42	Built-In Under Grill Refrigerator	42"	\$12,667
ARXE-42C	Built-In Under Grill Refrigerator ON 42' CART	42"	\$13,466
ARXE-56C	Built-In Under Grill Refrigerator ON 56" CART	56"	\$14,072

UNDER GRILL REFRIGERATOR FEATURES

- All Stainless Steel Construction Inside and Out
- 1,000 BTU All-Weather Refrigeration System for Deep-Cooling
- Certified to NSF Standards
- Temperatures Uniquely Adjustable from 27° to 56°F
- Commercial Fan-Driven Fin Evaporator

Cooling System

- Fully Front Ventilated
- Commercial Polyurethane Foam Insulation
- Flash Recovery System Quickly Cools Internal Temperature
- User-Friendly Digital Control with Lighted Display
- Door-Activated Internal Lighting



MODEL	DESCRIPTION	WIDTH	USD
URS-1XE	Single Door Refrigerator	28"	\$7,909
ACK	URS-1 Caster Kit		\$692
AKK	URS-1 Keg Kit		\$1,555



URS-1XE FEATURES

- Two Removable / Adjustable Stainless Steel Shelves
- Field-Reversible Door
- Converts to Kegerator in Seconds
- Digital Control with Lighted Display
- Commercial Fan-Driven Fin Evaporator Cooling System
- 7.25 Cubic Feet



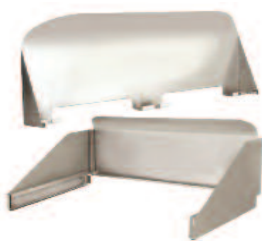
FOOD WARMERS



MODEL	DESCRIPTION	WIDTH	USD
AXEFW	*14" Built-In Food Warmer	14"	\$1,775
AXEFWC	*14" Cart Mount Food Warmer	24"	\$2,130



WIND GUARDS



MODEL	DESCRIPTION	WIDTH	USD
AWS-30	Wind Guard for 30" Built-In Grill	30"	\$615
AWS-30C	Wind Guard for 30" Built-In Grill	30"	\$742
AWS-36	Wind Guard for 36" Built-In Grill	36"	\$694
AWS-36C	Wind Guard for 36" Built-In Grill	36"	\$846
AWS-42	Wind Guard for 42" Built-In Grill	42"	\$773
AWS-42C	Wind Guard for 42" Built-In Grill	42"	\$929
AWS-56	Wind Guard for 56" Built-In Grill	56"	\$891
AWS-56C	Wind Guard for 56" Built-In Grill	56"	\$1,069



ALFRESCO PIZZA OVENS

Setting the standard for creative innovations in outdoor cooking equipment is what Alfresco has become known for. The Pizza Oven is an exciting new outdoor pizza and culinary oven engineered to commercial performance caliber. With a preheat time of only 15 minutes, the Pizza Oven is not only great for cooking pizza, but also is fabulous for baking, broiling, roasting and just about anything else you do in a regular oven.

However, it's faster and with much better results! Whether you're cooking 3-minute Neapolitan pizzas directly on the hearth, thick prime New York steaks pan seared in an iron skillet, herb and spice rubbed pork chops in a ceramic baking dish, skillet-sizzling shellfish, or zesty jalapeno corn bread in a ramekin, it can all be done in Alfresco's Pizza Oven.

- High-Tech 20,000 BTU High Heat Ceramic Infrared Hearth Burner
- 20,000 BTU Tube-Log Burner
- Alfresco Exclusive Air-Cooling Plenum keeps Control Panel Cool to the Touch
- 3/4" Thick High Quality Ceramic Slab Bottom and Ceiling for Even Intense Radiating Heat
- Complete 304 Heli-Arc Welded Stainless Steel Construction
- 456 Square Inches of Cooking Area
- Halogen Oven Light
- Removable Hinges and Doors
- Double Walled Removable Top
- 8 1/2" High Opening
- Counter Top Rear Exhaust

PIZZA OVEN & ACCESSORIES



MODEL	DESCRIPTION	WIDTH	USD
AXEPZABI	30" Pizza Oven For Built-In Installations NG	30"	\$11,411



MODEL	DESCRIPTION	WIDTH	USD
AXEPZA	30" Pizza Oven For Countertop Mounting	30"	\$10,822



MODEL	DESCRIPTION	WIDTH	USD
AXEPZAPP	*30" Deluxe Pizza Oven Prep Cart	30"	\$8,142



MODEL	DESCRIPTION	WIDTH	USD
APS-30PPC	30" Pizza Prep & Garnish Rail W/ Food Pans	30"	\$3,149

MODEL	DESCRIPTION	WIDTH	USD
ALXE42RFG	42" Standard Grill On Refrigerated Base NG	42"	\$24,188
ALXE42RFGLP	42" Standard Grill On Refrigerated Base LP	42"	\$24,188
ALXE42SZRFG	42" Standard Grill Sear Zone On Refrigerated Base NG	42"	\$24,189
ALXE42SZRFGLP	42" Standard Grill Sear Zone On Refrigerated Base LP	42"	\$24,189
ALXE56R	56" Standard Grill On Refrigerated Base Dbl Side Burner NG	56"	\$27,679
ALXE56RLP	56" Standard Grill On Refrigerated Base Dbl Side Burner LP	56"	\$27,679
ALXE56SZR	56" Sear Zone Grill On Refrigerated Base Dbl Side Burner NG	56"	\$27,679
ALXE56SZRLP	56" Sear Zone Grill On Refrigerated Base Dbl Side Burner LP	56"	\$27,679
ALXE56BFGR	56" Sear Zone Grill On Refrigerated Base NG	56"	\$30,055
ALXE56BFGRLP	56" Sear Zone Grill On Refrigerated Base LP	56"	\$30,055
AGV-PZA	Cover for freestanding Pizza oven		\$222

*All pizza ovens with a serial number starting with a 18-have a factory installed glass door and other enhancements.

VINIL COVERS



MODEL	DESCRIPTION	WIDTH	USD
AGV-30	Vinil cover for AGV-30	30"	\$1,626
AGV-30C	Vinil cover for AGV-30C	30"	\$1,810
AGV-30CSB	Vinil cover for AGV-30CSB	30"	\$1,847
AGV-36	Vinil cover for AGV-36	36"	\$1,847
AGV-36C	Vinil cover for AGV-36C	36"	\$1,977
AGV-36CSB	Vinil cover for AGV-36CSB	36"	\$1,995
AGV-42	Vinil cover for AGV-42	42"	\$2,064
AGV-42C	Vinil cover for AGV-42C	42"	\$2,069
AGV-42CSB	Vinil cover for AGV-42CSB	42"	\$2,069
AGV-56	Vinil cover for AGV-56	56"	\$2,069
AGV-56BFG	Vinil cover for AGV-56BFG	56"	\$2,069
AGV-56BFGC	Vinil cover for AGV-56BFGC	56"	\$2,217
AGV-56C	Vinil cover for AGV-56C	56"	\$2,217
AVDT-30	Vinil cover for AVDT-30	30"	\$2,217
AGV-PZA	Vinil cover for AGV-PZA		\$2,217